



Datasheet

LED Slim Down Light



• Product Features

- > Slim Design for easy installation
- > Best replacement on CFL/PLL
- > Up to 60% energy savings
- > IP Rating : IP20
- > Easy Recessed installation

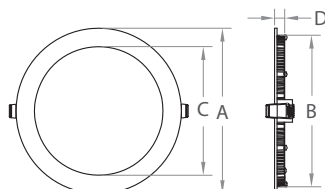
• Options

- > Dimming: ON-OFF
- > Installation: Recessed
- > Package : Standard or color box

• Applications

- > Commerical Lighting:
Shopping mall, Super-market,Hotel, Office
- > Public Lighting:
Path way , Stations , School ,Library etc

• Dimension



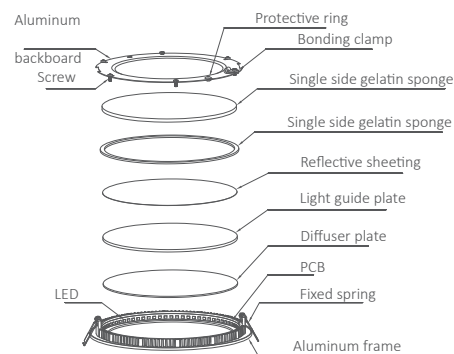
Product Name	A	B	C	D
R90	Ø90	Ø68	Ø50	12
R120	Ø120	Ø107	Ø82	12
R145	Ø145	Ø134	Ø102	12
R170	Ø170	Ø156	Ø127	12
R190	Ø190	Ø175	Ø150	12
R200	Ø200	Ø185	Ø153	12
R225	Ø225	Ø206	Ø176	12
R240	Ø240	Ø225	Ø193	12
R300	Ø300	Ø280	Ø250	12

Unit:mm

• Product Picture



• Explosion drawing



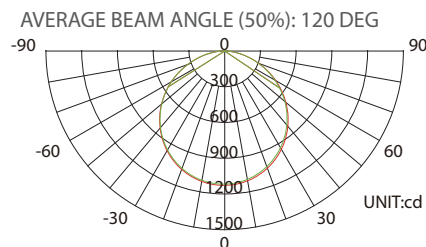
• Product code policy

PN XX -XX X XX - X X X X X - XXX

01 02 03 04 05 06 07 08 09 10 11

01. Product category: PN:Round Panel Light
02. Product dimension: eg: 12:Φ120mm
03. Rated power: eg: 04: 4W; 18: 18W
04. Luminous Efficacy: E:Eco 80LM/W
05. Color Temperature: eg:N1: 4000~4500K;TR:Tri-color
06. Product version: R: Round Version
07. Structural function: N:Normal cover
08. Electrical function:N:ON-OFF
- 09.Power attribute:2:AC200-240V Flicker power drive
- 10.Power supply manufacturer
- 11.Series No.: 001-499

• Photometry Curve



• Technical / Electrical Characters (at TA=25°C)

Item	Symbol	R90	R120	R145	R170	R190	R200	R225	R240	R300
Rated Power	W	4W	8W	10W	12W	18W	18W	18W	18W	22W
Product Code	/	PN09-04EN1 -RNN2B-001	PN12-04EN1 -RNN2B-001	PN14-10EN1 -RNN2B-001	PN17-12EN1 -RNN2B-001	PN19-18EN1 -RNN2B-001	PN20-18EN1 -RNN2B-001	PN22-18EN1 -RNN2B-001	PN24-18EN1 -RNN2B-001	PN30-22EN1 -RNN2B-001
LED Type/Qty	SMD2835	20	36	48	60	72	72	72	108	120
Lumen Efficacy	Lm/w	typ.75	typ.75	typ.75	typ.75	typ.75	typ.80	typ.80	typ.80	typ.80
Luminous Flux	LM	typ.300	typ.600	typ.750	typ.900	typ.1350	typ.1450	typ.1450	typ.1450	typ.1750
Color Index	CRI(Ra)					Ra>80				
Color Temperature	TC(K)				WW:3000K	NW:4000K	PW:5000K	CW:6000K		
Beam Angle	Degree								120 degree	
Dimming Function	/								ON-OFF	
Power Factor	PF								PF>0.95	
LED current	mA								Constant 45mA	
Input Voltage	V								AC200~240V/50Hz	
Working Voltage	V								Constant DC36~42V	
Housing material	/								Die-case Housing + PC Cover	
Starting time	S								<0.5S	
Protection Class	IP								IP20	
Temperature	°C					Operation:-15°C~+50°C			Storage:-25°C~+55°C	
Lumen Maintenance @6000hrs	%								80%	
Switch cycle before failure	times								100,000	
Life Span	h								30,000 hours	
Warranty	/								3 years	

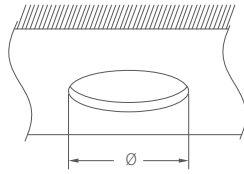
• Erp Technical Specification

Item	Symbol	Specification / Data
Color Index	CRI	Ra>80 , R9>0
Luminous Efficacy	Lm/W	Eco: tpy. 80LM/W
Energy efficiency Class	/	A+ / A++
Color consistency in level	/	Max. 6SDCM
THD	%	<15%
Starting Time	S	<0.5S
Switching Cycle before Failure	/	>100,000 times
Premature failure rate @1000h	/	0
Lumen Maintenance @ 6000h	%	>80%



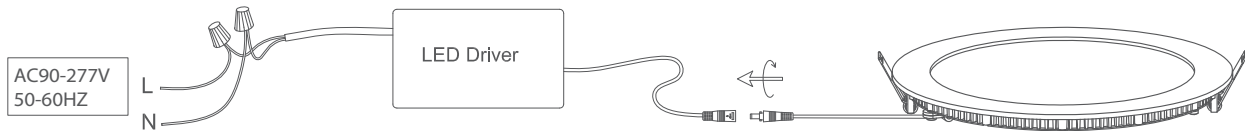
• Installation Instructions

1. Cut-out size



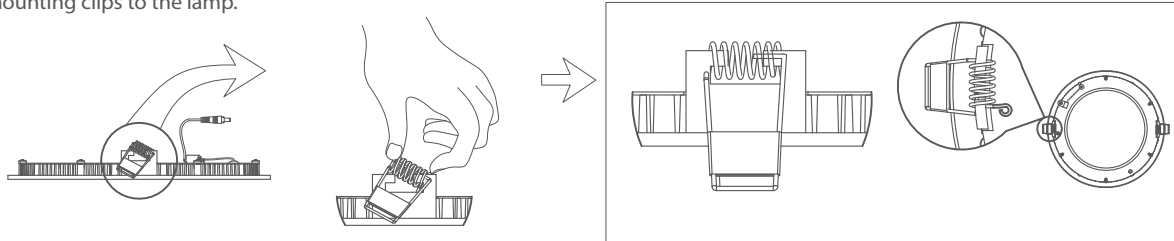
Product Name	R90	R120	R145	R170	R190	R200	R225	R240	R300
Cut-out Size	Ø72mm	Ø107mm	Ø134mm	Ø156mm	Ø177mm	Ø185mm	Ø206mm	Ø225mm	Ø280mm

2. Wiring diagram

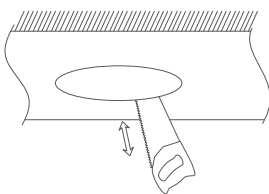


Installation Steps:

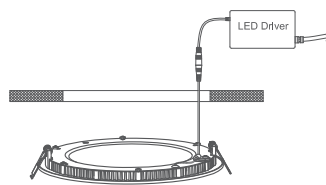
1. Fix the mounting clips to the lamp.



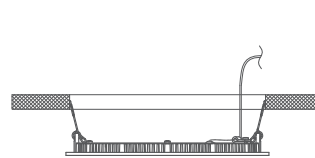
2. Cut out a suitable hole on the ceiling, according to the dimension diagram.



3. Turn off the AC Power and connect the input wire.



4. Push the lamp into the aperture with clips standing.



5. Push the lamp until it fix into the ceiling.



• Package

Product Type	Rated Power	Outer Carton	Qty/Carton	Unit N.W	G.W/Carton
R90	4W	435 x 295 x 250mm	40 pcs	150g	7.5kg
R120	8W	485 x 350 x 210mm	20 pcs	186g	5.2Kg
R145	10W	435 x 240 x 250mm	10 pcs	255g	4.0Kg
R170	12W	435 x 240 x 250mm	10 pcs	311g	4.6Kg
R190	18W	435 x 260 x 270mm	10 pcs	390g	5.3kg
R200	18W	435 x 260 x 270mm	10 pcs	430g	5.9Kg
R225	18W	385 x 335 x 290mm	10 pcs	480g	6.3Kg
R240	18W	435 x 300 x 310mm	10 pcs	500g	6.6Kg
R300	22W	420x 360 x 360mm	10 pcs	730g	9.0Kg

! CAUTION

- ※ In case of electric shock, please make sure the power is off before installation.
- ※ The lamp should be installed and operated by a qualified electrician or technician in accordance with relevant local codes.
- ※ Do not use sharp tools near or on the surface of the lamp.
- ※ Unpack and examine the product carefully. Report any damage and save all packing materials if any portion of the product was damaged during transportation.